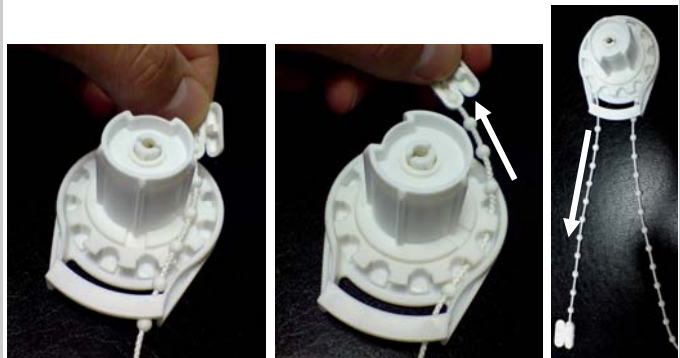
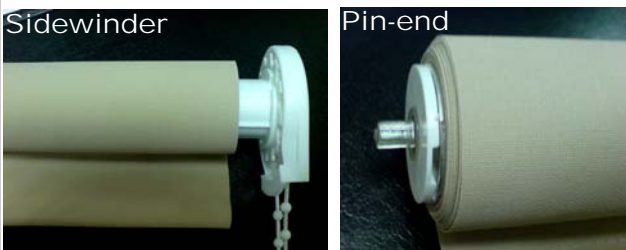


Sidewinder Installation

1. Decide which side the sidewinder is to be on
(The photographs in these instructions are for right-hand control: reverse for left-hand control)



2. Insert chain into sidewinder and pull approximately 15cm through at the back side of the sidewinder



3. Insert sidewinder and pin-end into roller tube.
Ensure they are fully inserted. Do not hammer into place as this may damage the components



4. To install the blind:

- Slide the sidewinder onto bracket;
- Open the pin-end bracket (as shown above);
- Set the pin into the bracket, ensuring it is correctly located;
- Close the bracket

Set Chain Length

1. Cut the chain to the desired length with a pair of scissors

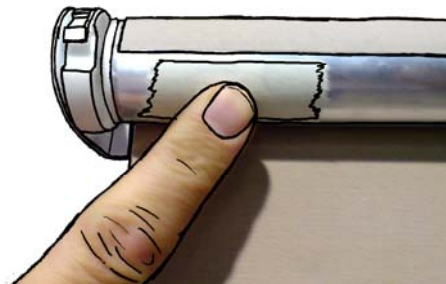


2. Firmly press the cut end of the chain (as shown) into the chain coupling device and close to link the chain.

Correct Fabric Run-Off (if necessary)



1. The above picture shows the fabric running off from the *right-hand side* of the blind



2. This picture shows how to correct fabric run-off from the *left-hand side*. Simply stick a small (~3 cm long) strip of masking tape to the aluminium tube

3. Fully wind the blind up. Repeat step 2 until the fabric is no longer running-off

